

Fabric Easter Eggs



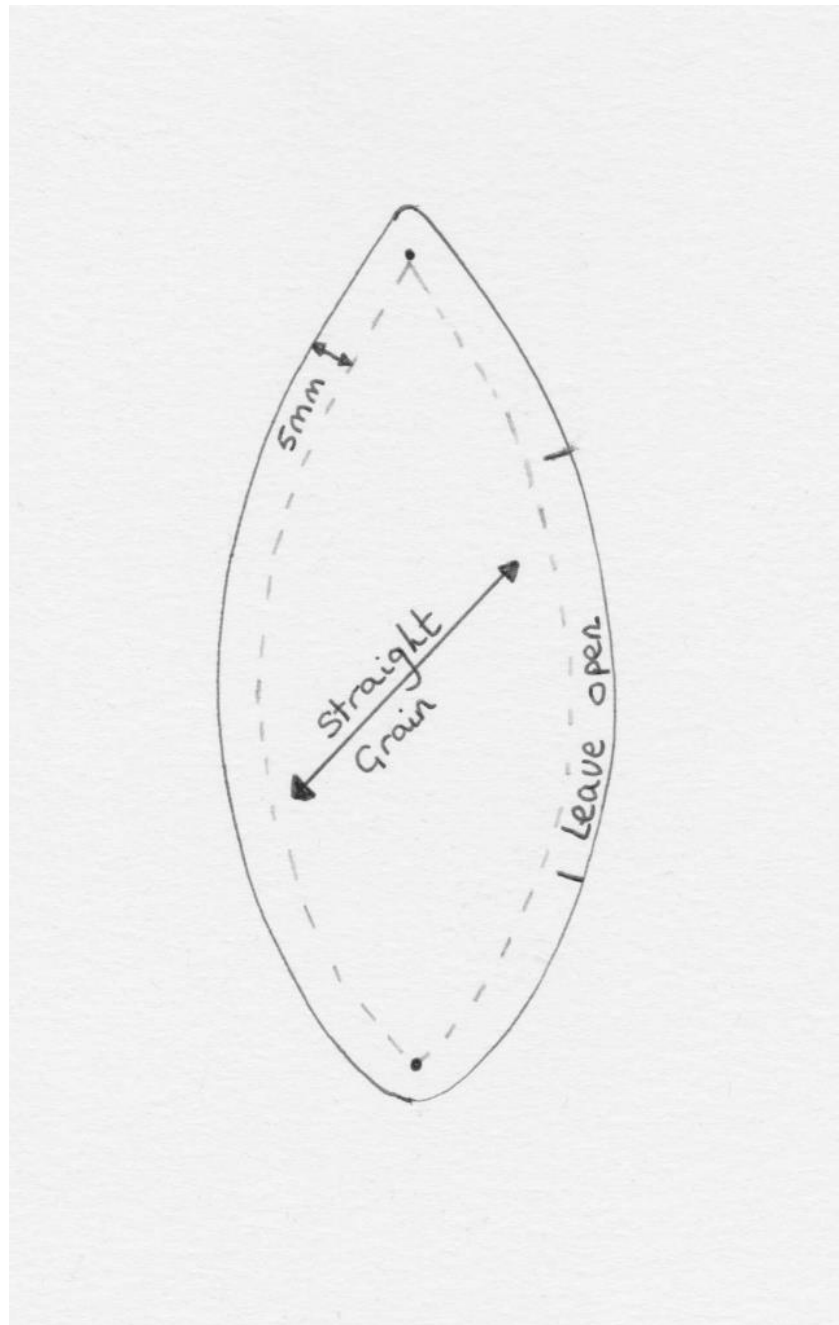
Here's a lovely way to use up scraps of fabric or recycle fabric from clothes you no longer need.



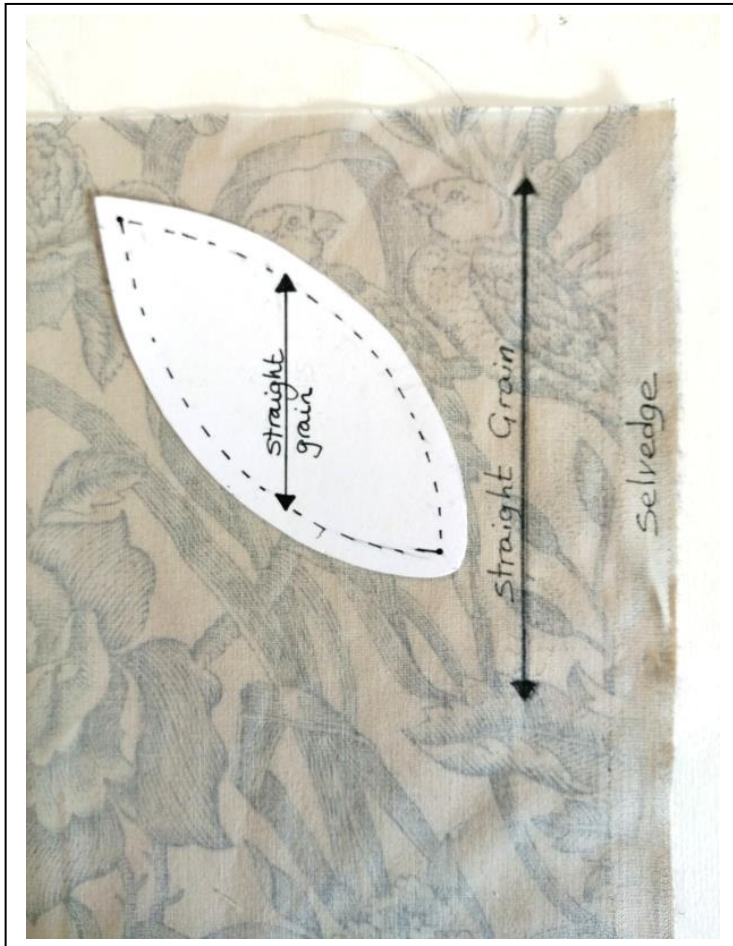
If you don't have a sewing machine you could hand stitch!

Stage 1

Print out this pattern piece. If you want a longer lasting pattern piece, draw around it onto card. Cereal packaging works well.



Stage 2

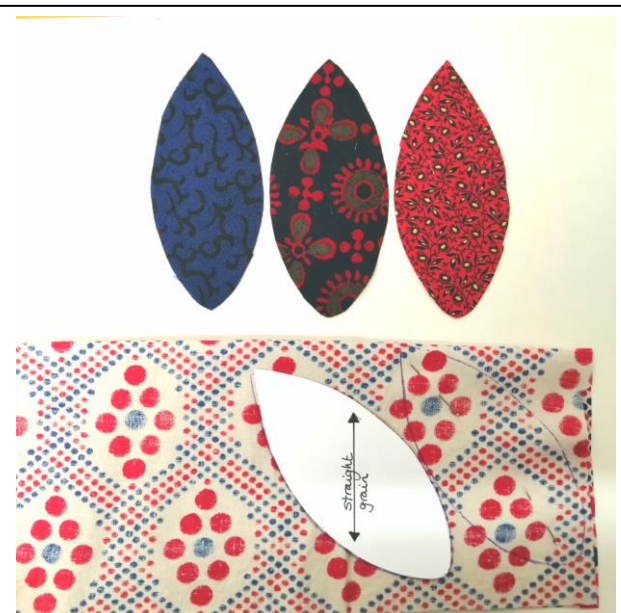


Place the pattern piece onto the fabric with the straight grain line running down the grain line of the fabric.

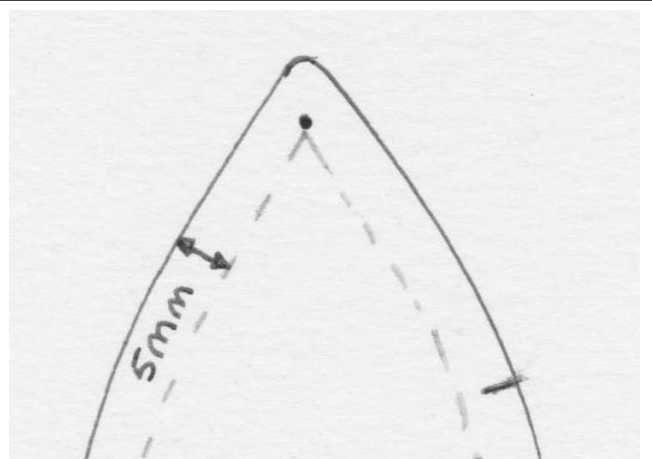
The egg should be at an angle.

This means that your egg will have a smooth finish once it's stitched together.

You will need to cut 4 pieces for 1 egg.



Stage 3



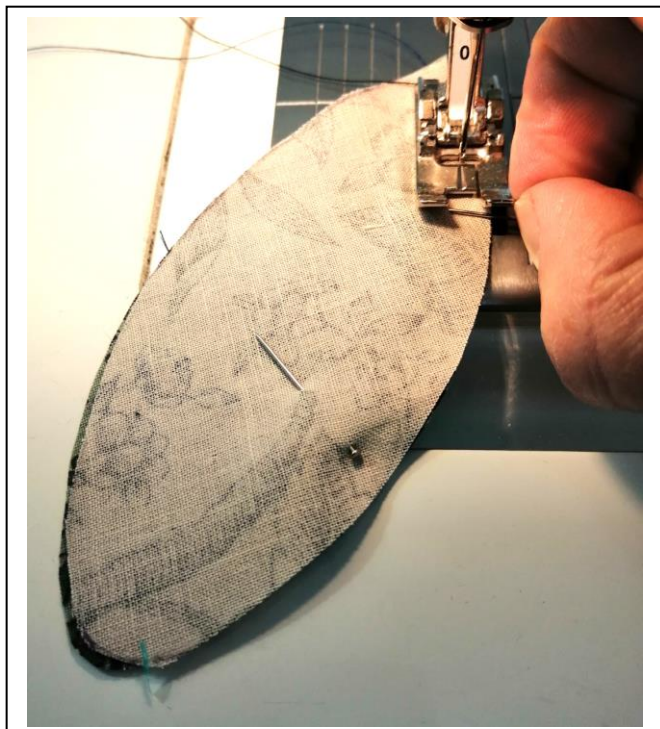
Mark the dots at the top and bottom of the egg onto the fabric.

The top of the egg is more pointed.

If you want to make it easier to sew, mark out the stitch line 5mm from the edge.

Place the right sides of the fabric together and pin across to hold edges together.

Stage 4



Stitch the two pieces of fabric together **down one side only**, 5mm in from the edge.

Start at the dot and finish at the dot.

REMOVE PINS AS YOU GO!

MAKE SURE TO BACK STITCH TO SECURE ENDS.

Repeat process on the other section.



Stage 5



Turn 1 section right side out.

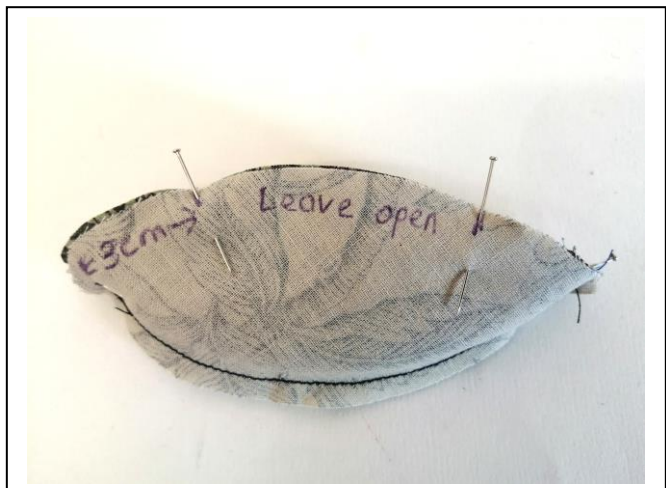


Place turned section inside the other making sure right sides are together.

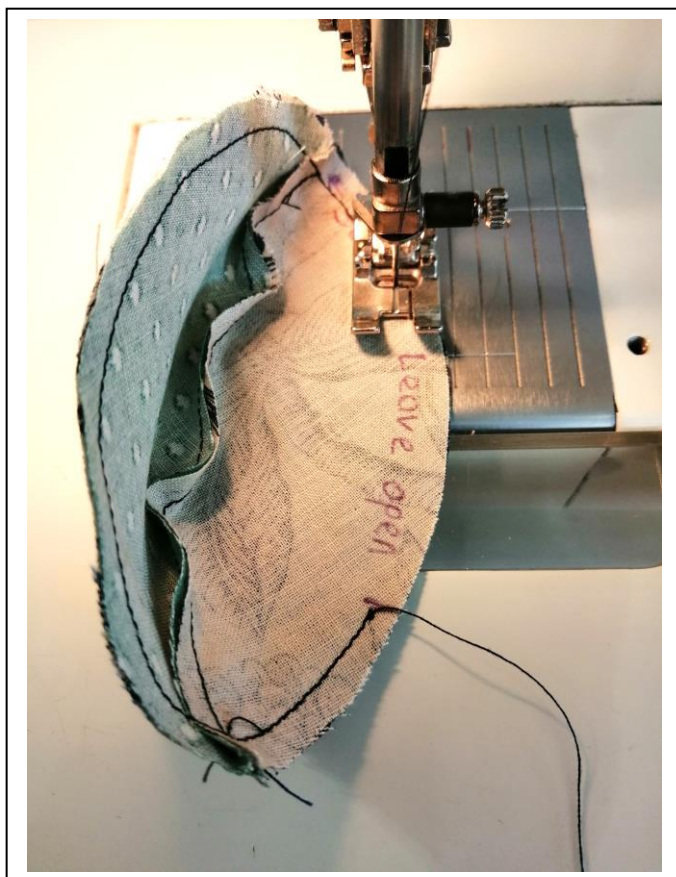


Pin sections together.

Leave a gap approx 3cm from each end.



Stage 6



Stitch pinned sections together leaving a gap for turning through.

MAKE SURE TO BACK STITCH AT THE BEGINNING AND END.



Turn through to the right side.

Stuff with wadding until it feels firm.



Alternative wadding...

I washed an old pillow and used the stuffing.

Odd socks!!

Cotton wool.

Stage 7



Hand stitch the opening up using a small slip stitch.



Make a few and display them in a bowl or basket.

Happy stitching and
Happy Easter!
Love Ginn

Send me photos of your creations
ginncreative@btinternet.com